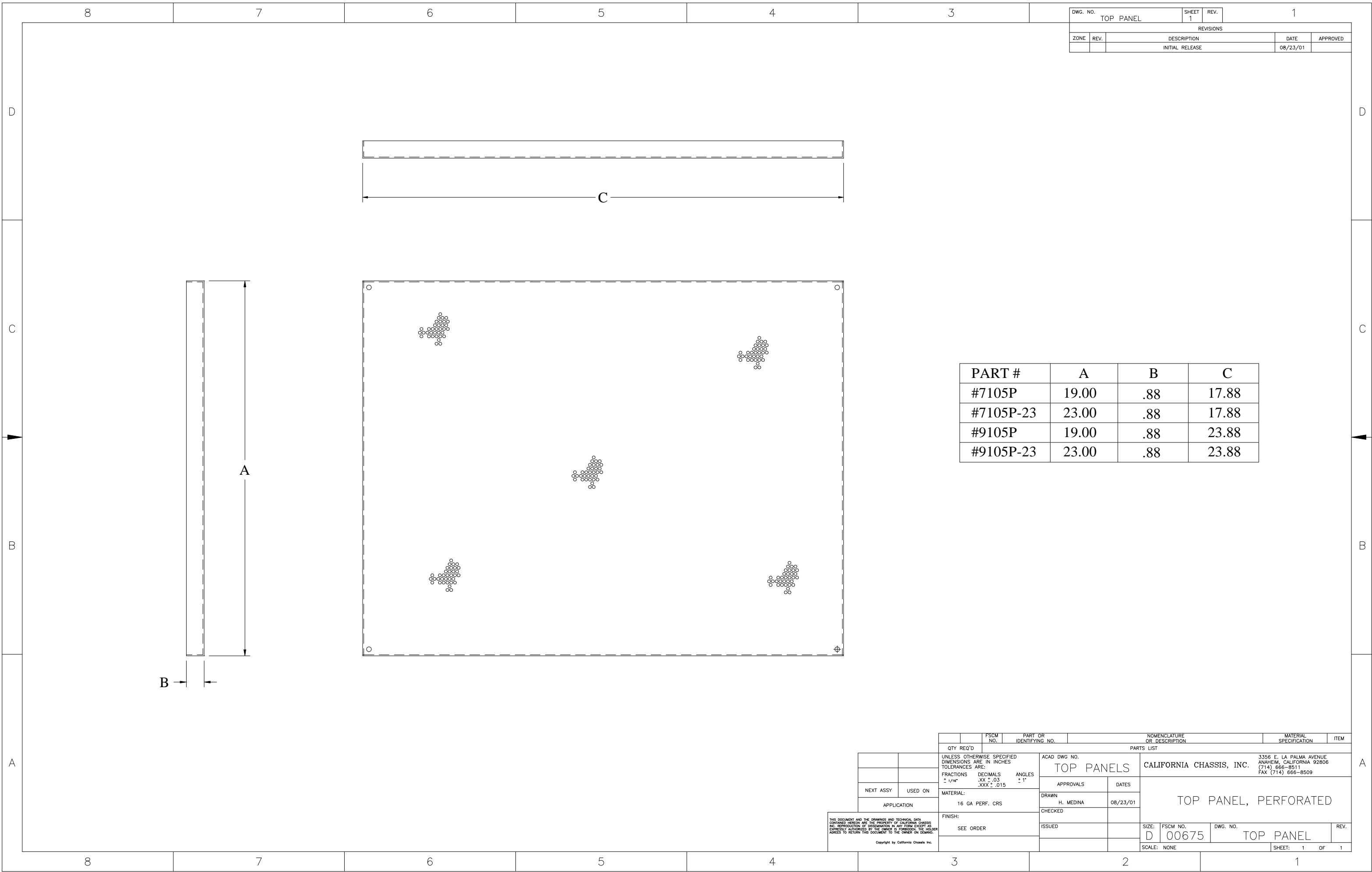


DWG. NO. TOP PANEL		SHEET 1	REV.	1	
REVISIONS					
ZONE	REV.	DESCRIPTION	DATE	APPROVED	
		INITIAL RELEASE	08/23/01		



PART #	A	B	C
#7105P	19.00	.88	17.88
#7105P-23	23.00	.88	17.88
#9105P	19.00	.88	23.88
#9105P-23	23.00	.88	23.88

QTY REQ'D		FSCM NO.	PART OR IDENTIFYING NO.	NOMENCLATURE OR DESCRIPTION	MATERIAL SPECIFICATION	ITEM
UNLESS OTHERWISE SPECIFIED DIMENSIONS ARE IN INCHES TOLERANCES ARE:		ACAD DWG NO.		PARTS LIST		
FRACTIONS DECIMALS ANGLES		TOP PANELS		CALIFORNIA CHASSIS, INC. 3356 E. LA PALMA AVENUE ANAHEIM, CALIFORNIA 92806 (714) 666-8511 FAX (714) 666-8509		
NEXT ASSY	USED ON	MATERIAL:	APPROVALS	DATES	TOP PANEL, PERFORATED	
APPLICATION	16 GA PERF. CRS	H. MEDINA	08/23/01			
FINISH:	SEE ORDER	CHECKED				
THIS DOCUMENT AND THE DRAWINGS AND TECHNICAL DATA CONTAINED HEREON ARE THE PROPERTY OF CALIFORNIA CHASSIS INC. REPRODUCTION OF INFORMATION IN ANY FORM EXCEPT AS EXPRESSLY AUTHORIZED BY THE OWNER IS FORBIDDEN. THE HOLDER AGREES TO RETURN THIS DOCUMENT TO THE OWNER ON DEMAND.		ISSUED			SIZE: FSCM NO.	DWG. NO.
Copyright by California Chassis Inc.					D 00675	TOP PANEL
					SCALE: NONE	SHEET: 1 OF 1