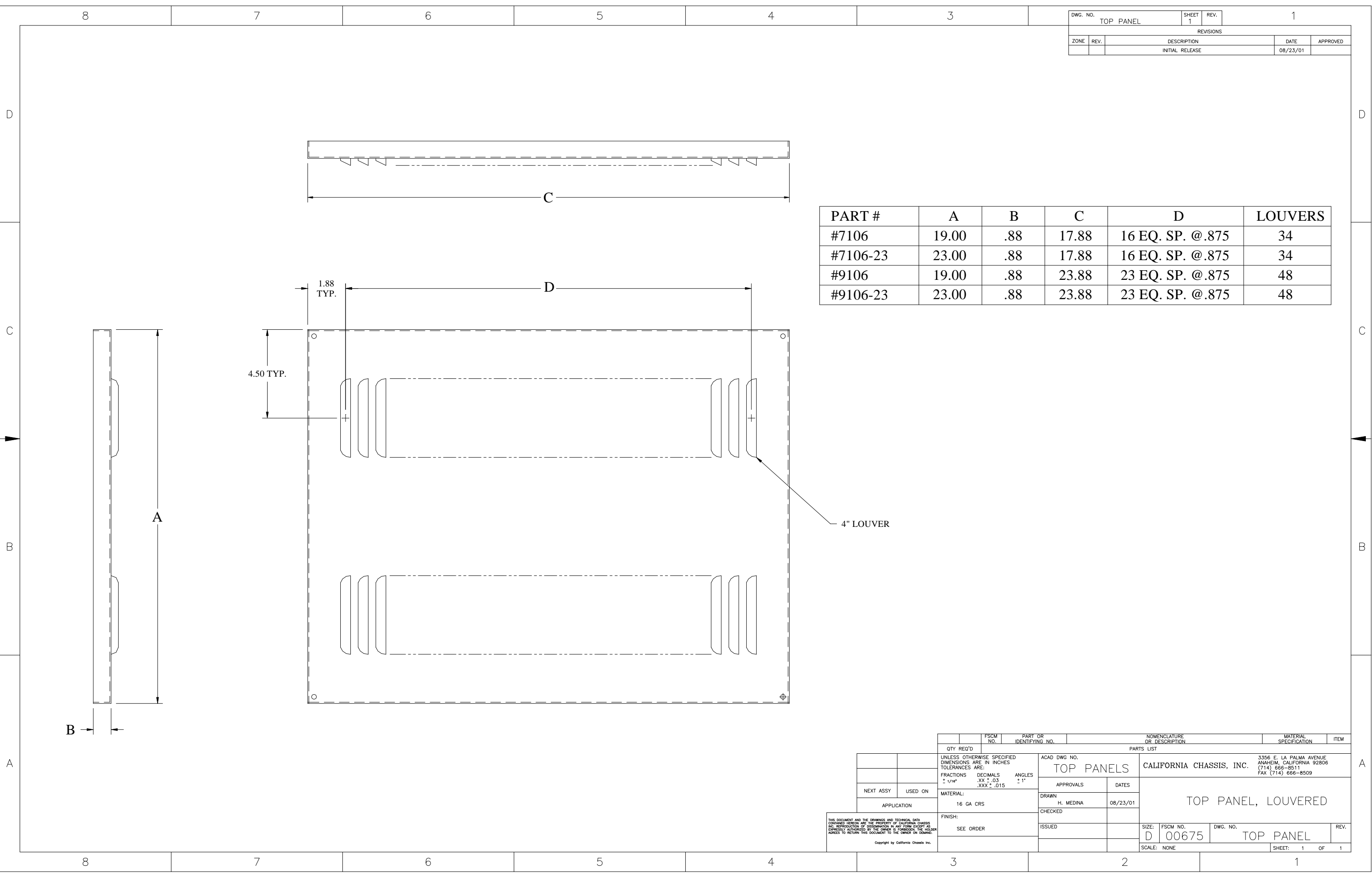


DWG. NO. TOP PANEL		SHEET 1	REV. 1	1	
REVISIONS					
ZONE	REV.	DESCRIPTION	DATE	APPROVED	
		INITIAL RELEASE	08/23/01		



PART #	A	B	C	D	LOUVERS
#7106	19.00	.88	17.88	16 EQ. SP. @.875	34
#7106-23	23.00	.88	17.88	16 EQ. SP. @.875	34
#9106	19.00	.88	23.88	23 EQ. SP. @.875	48
#9106-23	23.00	.88	23.88	23 EQ. SP. @.875	48

QTY REQ'D	FSCM NO.	PART OR IDENTIFYING NO.	NOMENCLATURE OR DESCRIPTION	MATERIAL SPECIFICATION	ITEM
PARTS LIST					
UNLESS OTHERWISE SPECIFIED DIMENSIONS ARE IN INCHES TOLERANCES ARE: FRACTIONS DECIMALS ANGLES ± 1/16" .XX ± .03 ± 1"			ACAD DWG NO. TOP PANELS		
MATERIAL: 16 GA CRS			APPROVALS	DATES	
FINISH: SEE ORDER			DRAWN H. MEDINA	08/23/01	
APPLICATION			CHECKED	TOP PANEL, LOUVERED	
ISSUED			SIZE: D		
NEXT ASSY			FSCM NO. 00675		
USED ON			DWG. NO. TOP PANEL		
SCALE: NONE			SHEET: 1 OF 1		

THIS DOCUMENT AND THE DRAWINGS AND TECHNICAL DATA CONTAINED HEREON ARE THE PROPERTY OF CALIFORNIA CHASSIS INC. RESTRICTION OF DISTRIBUTION IS IN FULL EFFECT AS EXPRESSLY AUTHORIZED BY THE OWNER'S PERMISSION. THE HOLDER AGREES TO RETURN THIS DOCUMENT TO THE OWNER ON DEMAND.
Copyright by California Chassis Inc.