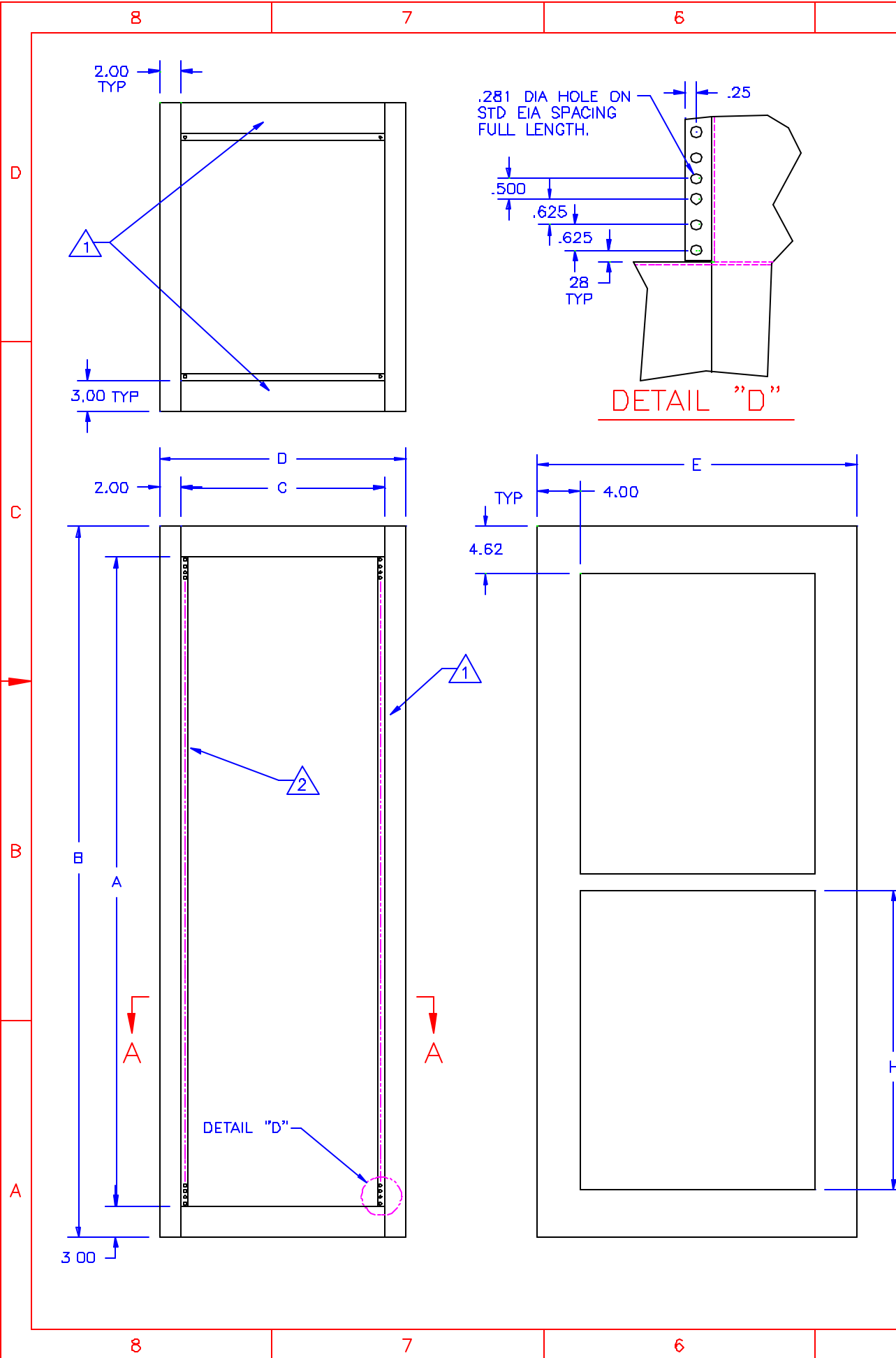
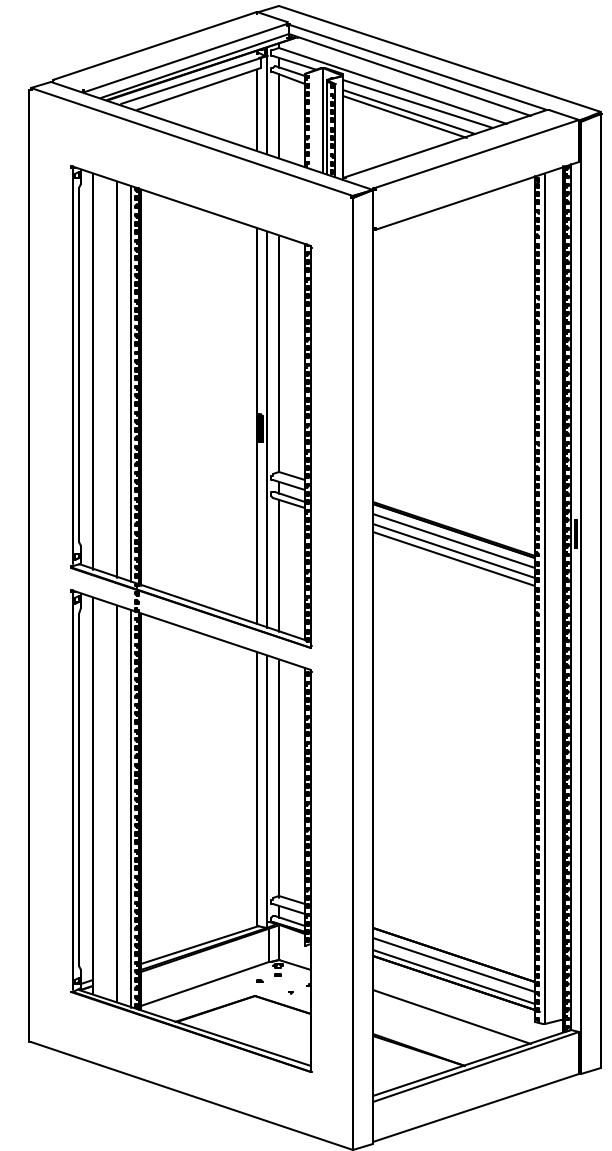


DWG NO	SYSTEM 90	SHEET	1	REV	B	1
REVISIONS						
ZONE	REV.	DESCRIPTION	DATE	APPROVED		
	A	INITIAL RELEASE	04/21/87			
	B	REDRAWN ON ACAD ADD 625 & 36 KINCK-OUTS	08/07/92			

FRAME ONLY  
INCLUDES (2 PAIR) COMBINATION MTG CHANNELS.

PART#	A	B	C	D	E	F	G	H
7101 FRAME	42.06	48.06	19.09	23.09	24.00	15.88	10.75	18.60
7101-23 FRAME	42.06	48.06	23.09	27.09	24.00	15.88	14.75	18.60
7102 FRAME	63.06	69.06	19.09	23.09	24.00	15.88	10.75	29.60
7102-23 FRAME	63.06	69.06	23.09	27.09	24.00	15.88	14.75	29.60
7103 FRAME	70.06	76.06	19.09	23.09	24.00	15.88	10.75	32.60
7103-23 FRAME	70.06	76.06	23.09	27.09	24.00	15.88	14.75	32.60
7104 FRAME	77.06	83.06	19.09	23.09	24.00	15.88	10.75	36.10
7104-23 FRAME	77.06	83.06	23.09	27.09	24.00	15.88	14.75	36.10
7104AVB FRAME	78.81	84.81	19.09	23.09	24.00	15.88	10.75	37.00
7104AVB-23 FRAME	78.81	84.81	23.09	27.09	24.00	15.88	14.75	37.00
9101 FRAME	42.06	48.06	19.09	23.09	30.00	21.88	10.75	18.60
9101-23 FRAME	42.06	48.06	23.09	27.09	30.00	21.88	14.75	18.60
9102 FRAME	63.06	69.06	19.09	23.09	30.00	21.88	14.75	29.60
9102-23 FRAME	63.06	69.06	23.09	27.09	30.00	21.88	14.75	29.60
9103 FRAME	70.06	76.06	19.09	23.09	30.00	21.88	10.75	32.60
9103-23 FRAME	70.06	76.06	23.09	27.09	30.00	21.88	14.75	32.60
9104 FRAME	77.06	83.06	19.09	23.09	30.00	21.88	10.75	36.10
9104-23 FRAME	77.06	83.06	23.09	27.09	30.00	21.88	14.75	36.10
9104AVB FRAME	78.81	84.81	19.09	23.09	30.00	15.88	10.75	37.00
9104AVB-23 FRAME	78.81	84.81	23.09	27.09	30.00	15.88	14.75	37.00

- NOTES:
- ALL WELDED CONSTRUCTION.
  - 1. FRAME 16 GA (059) CRS
  - 2. COMBINATION MTG CHANNEL, (2) PAIR STANDARD REQ'D.
  - 3. BOLTING CHANNEL (P4000 UNISTRUT OR EQUAL) 13/16 X 1 5/8 X 16 GA STEEL, 3 PLCS PER SIDE.
  - 4. FINISH: DEGREASED AND STEAM PHOSPHATIZED PAINT WITH COMMERCIAL BAKING ENAMEL PER FED-STD-595.



QTY REQ'D	FRM NO.	PART OR IDENTIFYING NO.	NUMERATOR OR DESCRIPTION	MATERIAL SPECIFICATION	ITEM
UNLESS OTHERWISE SPECIFIED DIMENSIONS ARE IN INCHES					
TOLERANCES ARE:					
FRACTIONS	DECIMALS	ANGLES			
± 1/16"	± .005	± 1°			
NEXT ASSY USED ON			APPROVALS	DATE	
APPLICATION			DRAWN	H MEDINA	06/07/92
MATERIAL			CHECKED		
FINISH			ISSUED		
SEE NOTE #1					
SEE NOTE #4					
THIS DRAWING AND THE DIMENSIONS AND TOLERANCES ARE THE PROPERTY OF CALIFORNIA CHASSIS, INC. NO PARTS OF THIS DRAWING OR THE DIMENSIONS OR TOLERANCES ARE TO BE REPRODUCED OR USED IN ANY MANNER WITHOUT THE WRITTEN PERMISSION OF CALIFORNIA CHASSIS, INC.			AGAD DWG NO		
			SYS90		
			CALIFORNIA CHASSIS, INC.		
			3356 E LA PALMA AVENUE		
			ANAHEIM, CALIFORNIA 92808		
			(714) 948-8511		
			FAX (714) 948-8509		
			VERTICAL CABINET		
			SIZE	FRM NO.	DWG. NO.
			D	00675	SYSTEM 90
			SCALE	1/8	SHEET 1 OF 1