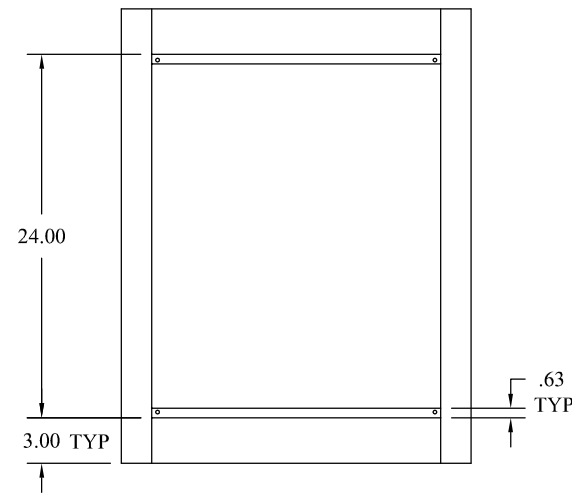
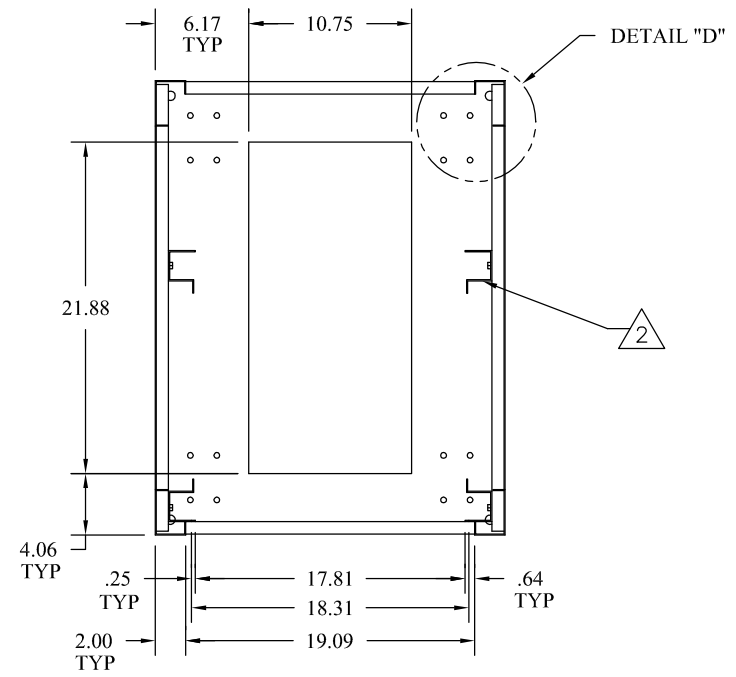


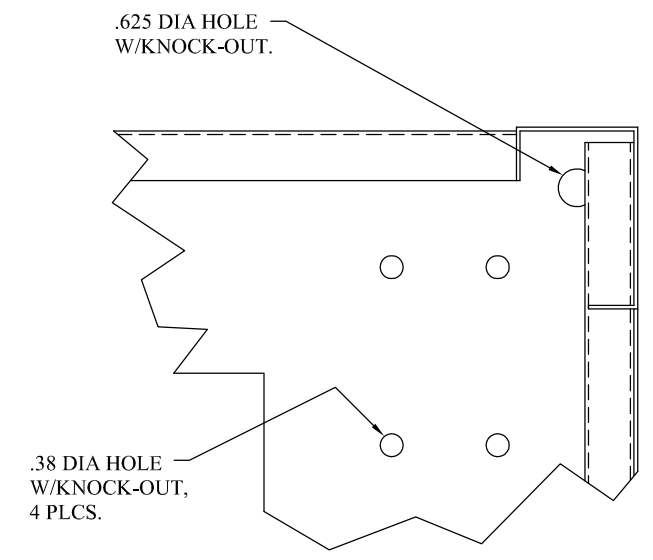
DWG. NO.	9100	SHEET	1	REV.	B	1
REVISIONS						
ZONE	REV.	DESCRIPTION	DATE	APPROVED		
A		INITIAL RELEASE	12/08/86			
B		REDRAWN ON ACAD. ADD .625 & .38 KNOCK-OUTS.	12/16/92			



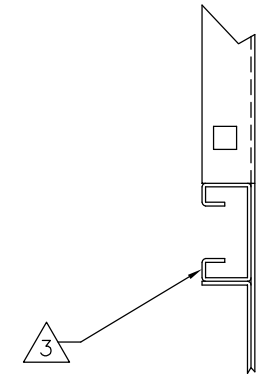
TOP VIEW



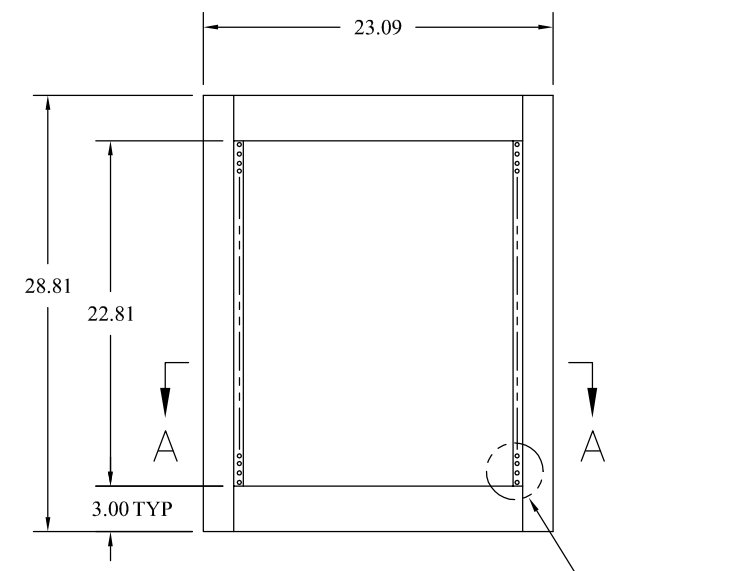
SECTION A-A



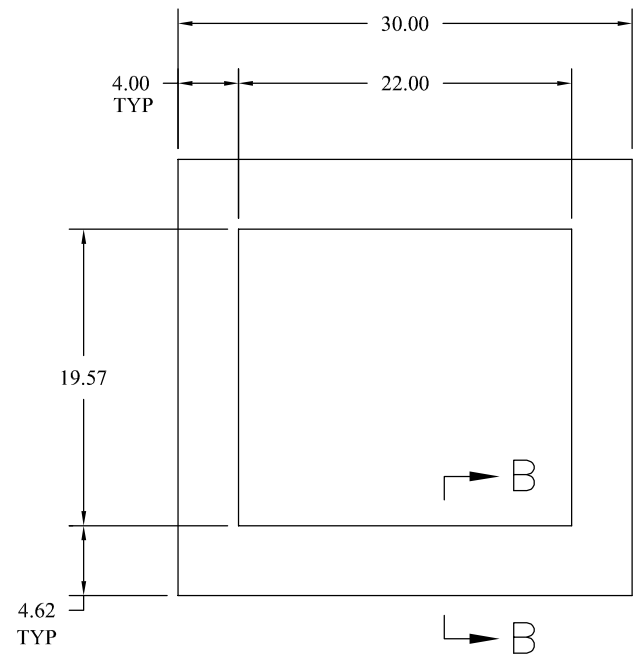
DETAIL "D"
(TYP 4 CORNERS)



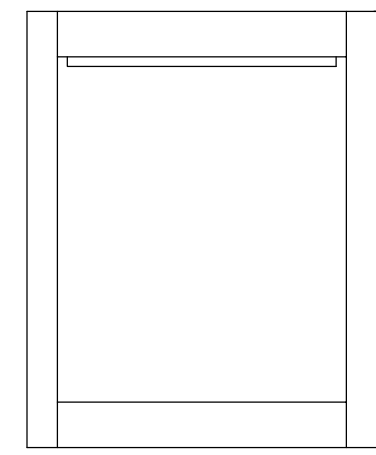
SECTION B-B



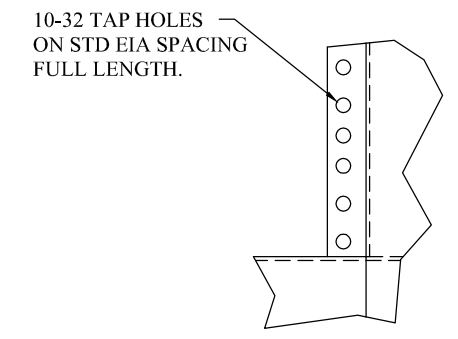
FRONT VIEW



SIDE VIEW
(OPEN SIDE)



REAR VIEW



DETAIL "C"

- NOTES: ALL WELDED AND SPOTWELDED CONSTRUCTION.
- FRAME 16 GA(.059) CRS.
 - COMBINATION MTG RAIL, (2) PAIR STANDARD REQ'D, FRONT & ADJUSTABLE.
 - BOLTING CHANNEL (P4000 UNISTRUT OR EQUAL) 13/16 X 1 5/8 X 16 GA STEEL, 2 PLCS PER SIDE.
 - DEGREASED AND STEAM PHOSPHATIZED, THEN PAINT WITH COMMERCIAL BAKING ENAMEL PER FED-STD-595.

QTY REQ'D		FSCM NO.	PART OR IDENTIFYING NO.	NOMENCLATURE OR DESCRIPTION	MATERIAL SPECIFICATION	ITEM
PARTS LIST						
UNLESS OTHERWISE SPECIFIED DIMENSIONS ARE IN INCHES		ACAD DWG NO.		CALIFORNIA CHASSIS, INC. 3356 E. LA PALMA AVENUE ANAHEIM, CALIFORNIA 92806 (714) 666-8511 FAX (714) 666-8509		
TOLERANCES ARE:		9100		APPROVALS		
FRACTIONS	DECIMALS	ANGLES		DATE		
± 1/16"	.XX ± .03	± 1°		12/08/86		
	.XXX ± .015					
NEXT ASSY	USED ON	MATERIAL:	SEE NOTES.	DRAWN	H. MEDINA 12/08/86	
APPLICATION		FINISH:	SEE NOTES.	CHECKED	RAUDEL M 12/08/86	
THIS DOCUMENT AND THE DIMENSIONS AND TECHNICAL DATA CONTAINED HEREON ARE THE PROPERTY OF CALIFORNIA CHASSIS, INC. REPRODUCTION OF DISSEMINATION IN ANY FORM EXCEPT AS EXPRESSLY AUTHORIZED BY THE OWNER IS FORBIDDEN. THE HOLDER AGREES TO RETURN THIS DOCUMENT TO THE OWNER ON DEMAND.		CUSTOMER:		ISSUED		
Copyright by California Chassis Inc.				SIZE: D	FSCM NO. 00675	DWG. NO. 9100
				SCALE: NONE	REV. B	
				SHEET: 1 OF 1		